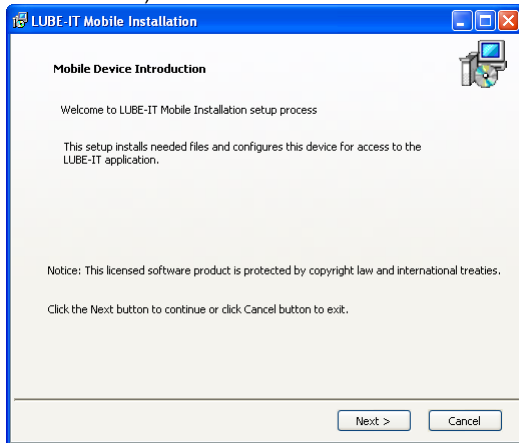
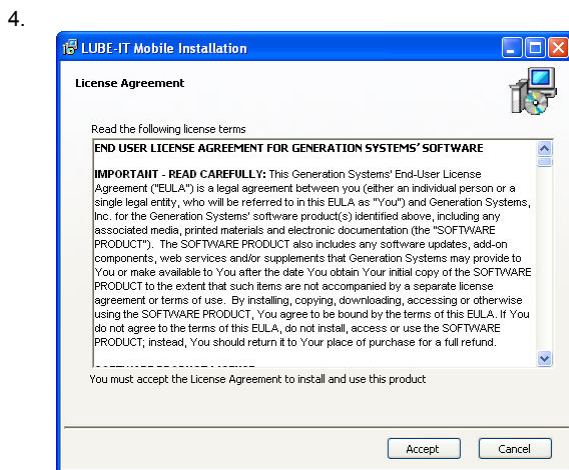


LUBE-IT Mobile Device Setup Instructions

1. Connect the mobile device to the computer on which you want to run the LUBE-IT Mobile Device Setup program (via cable, cradle or Bluetooth).
2. Wait for the sync session between the mobile device and computer to begin and indicate a successful connection. For Windows XP, sync sessions are made with Microsoft's ActiveSync, which you may need to install separately. For Windows 7, sync sessions are made with the built-in Mobile Device Manager.
3. Locate and run the LUBEITMobileInstall program. It is located in the LUBE-IT_Mobile folder within the LUBE-IT folder on the application server (and also on the LUBE-IT installation CD).

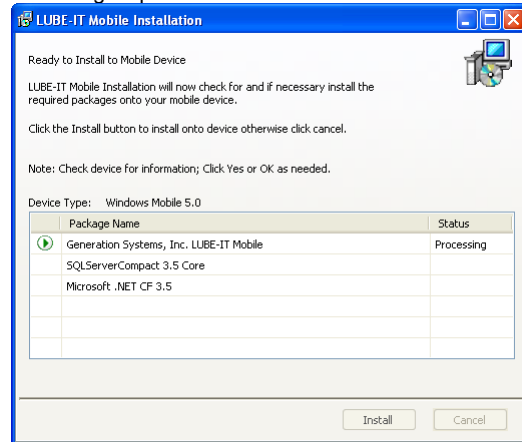


Click the **Next >** button to continue.



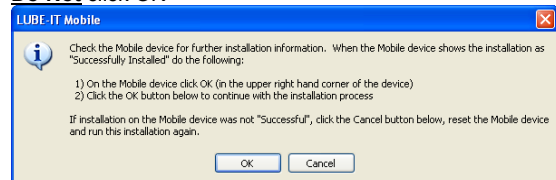
Read the License Agreement and click the **Accept** button to accept its terms and continue. Otherwise click the **NO** button.

5. Multiple components may need to be installed on the mobile device. You will need to refer to the mobile device to complete the installation of each of these components. After which, return to your computer to continue with the remaining steps.



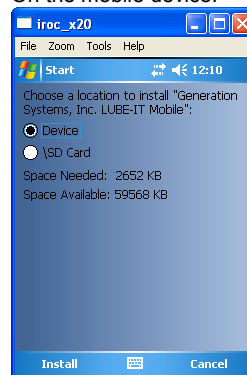
Click the **Install** button to begin installing the first component onto the mobile device.

6. **Do Not** click OK



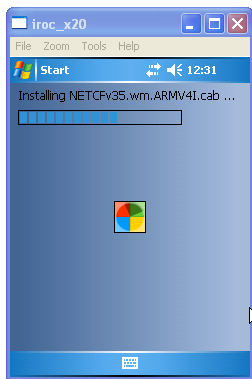
Do Not click OK just yet. Read the message and refer to your mobile device for the next few steps.

7. On the mobile device:



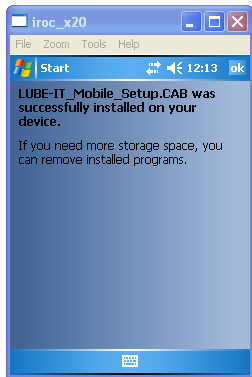
Select the **Device** option and tap the **Install** button in the lower left corner.

8.



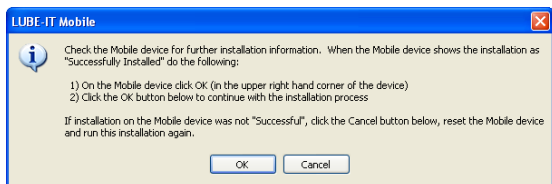
Please wait as the installation progresses.

9.



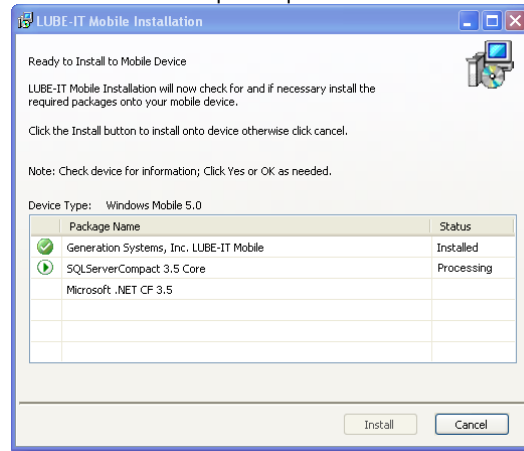
When the success message displays, tap the **ok** button in the upper right corner to continue. Now, refer back to your computer for additional steps.

10.



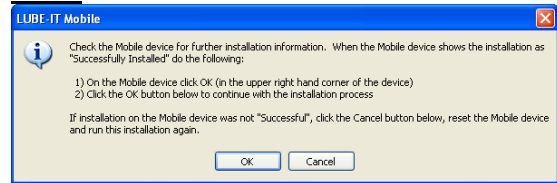
Click the **OK** button to continue if the component was successfully installed. Otherwise, click cancel to abort the installation process, reset the mobile unit, and try the installation again. If the problem persists, contact technical support for further assistance.

11. Install the next component. If this component already shows as installed skip to step 15.



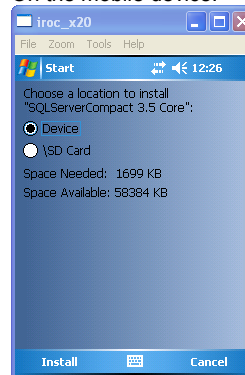
Click the **Install** button to begin installing the next component onto the mobile device.

12. **Do Not** click OK



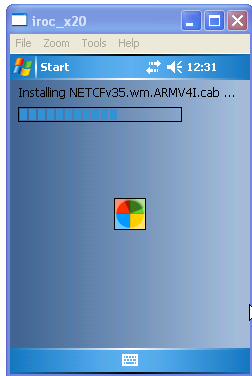
Do Not click OK just yet. Read the message and refer to your mobile device for the next few steps.

13. On the mobile device:



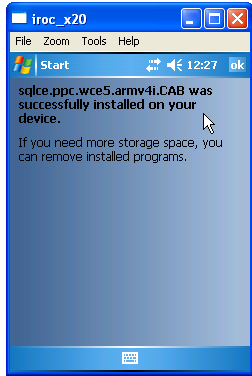
Select the **Device** option and tap the **Install** button in the lower left corner.

14.



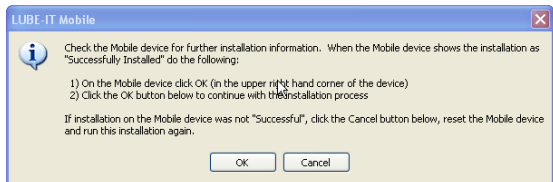
Please wait as the installation progresses.

15. On the device.



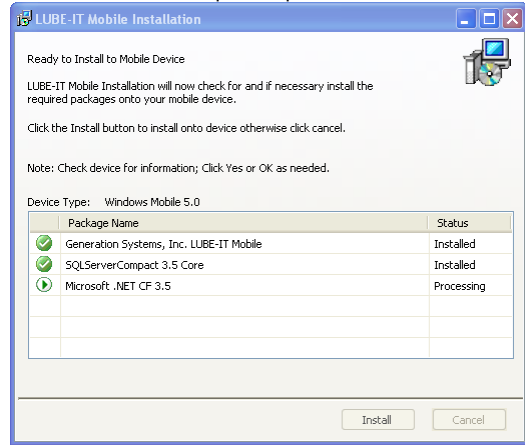
When the success message displays, tap the **ok** button in the upper right corner to continue. Now, refer back to your computer for additional steps.

16.



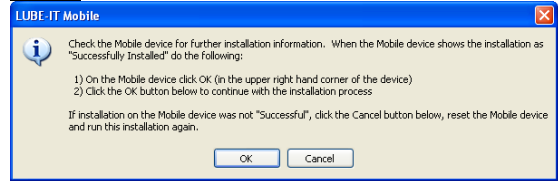
Click the **OK** button to continue if the component was successfully installed. Otherwise, click cancel to abort the installation process, reset the mobile unit, and try the installation again. If the problem persists, contact technical support for further assistance.

17. Install the next component. If this component already shows as installed skip to step 21.



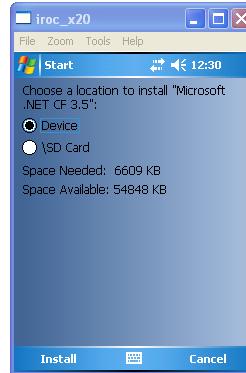
Click the **Install** button to begin installing the next component onto the mobile device.

18. **Do Not** click OK



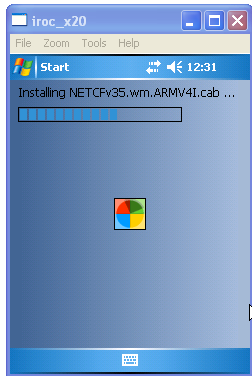
Do Not click OK just yet. Read the message and refer to your mobile device for the next few steps.

19. On the device:



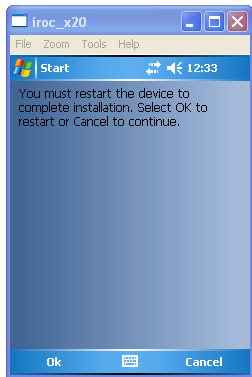
Select the **Device** option and tap the **Install** button in the lower left corner.

20.



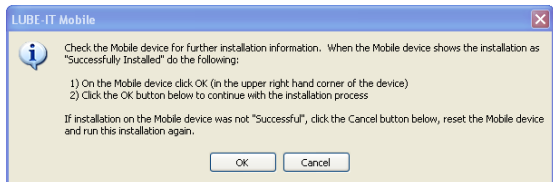
Please wait as the installation progresses.

21.



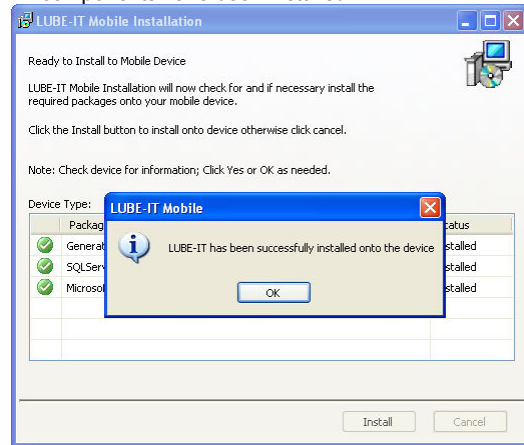
When the success message displays, tap the **ok** button in the upper right corner to continue. Now, refer back to your computer for additional steps.

22.



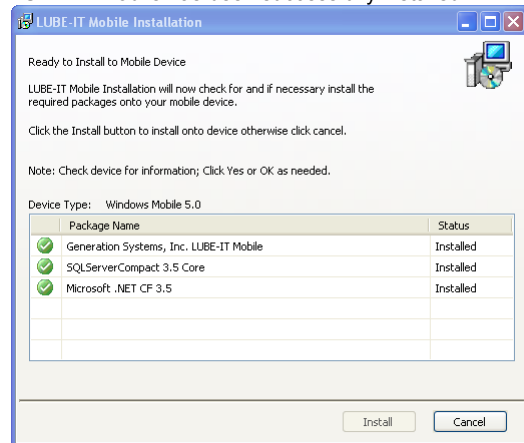
Click the **OK** button to continue if the component was successfully installed. Otherwise, click cancel to abort the installation process, reset the mobile unit, and try the installation again. If the problem persists, contact technical support for further assistance.

23. All components have been installed.



Click the **OK** button to continue.

24. LUBE-IT Mobile has been successfully installed!



Click the **Cancel** button to exit the setup.